

CURRENT TRANSFORMER

Model 139MR

Window Diameter 6.50"

Application:
Relaying

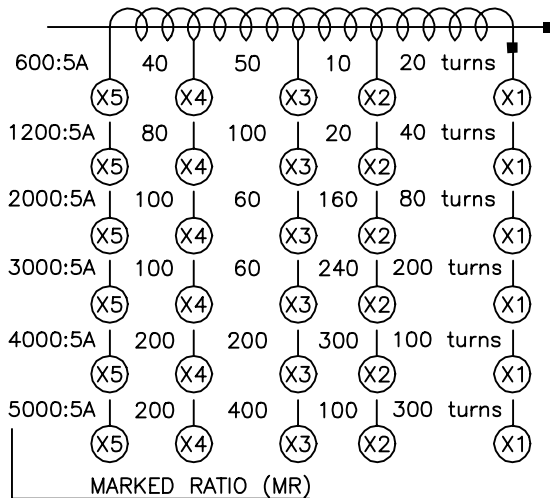
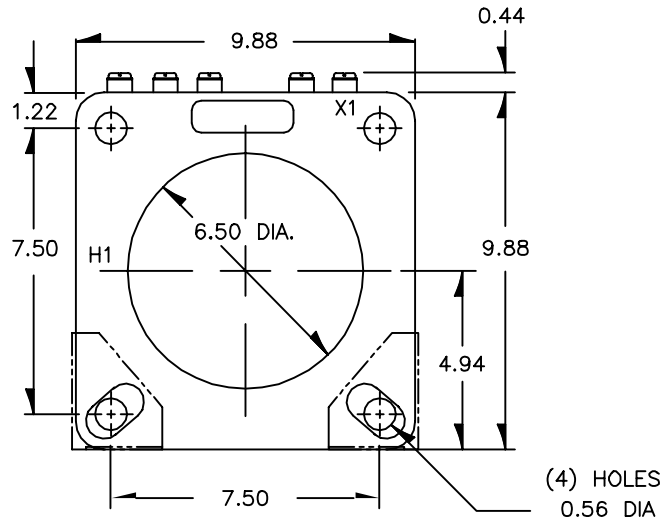
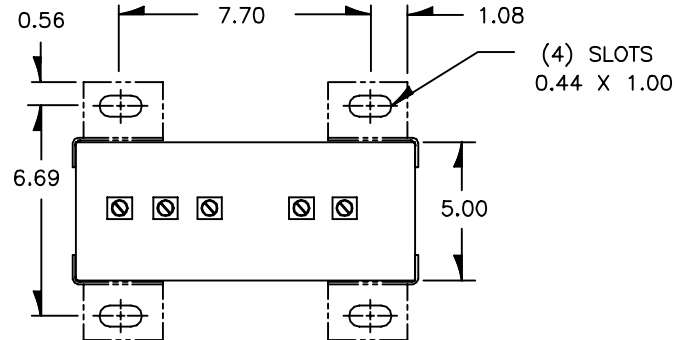
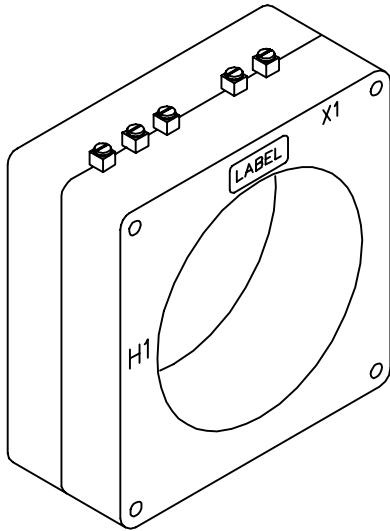
Frequency:
50 - 400 Hz

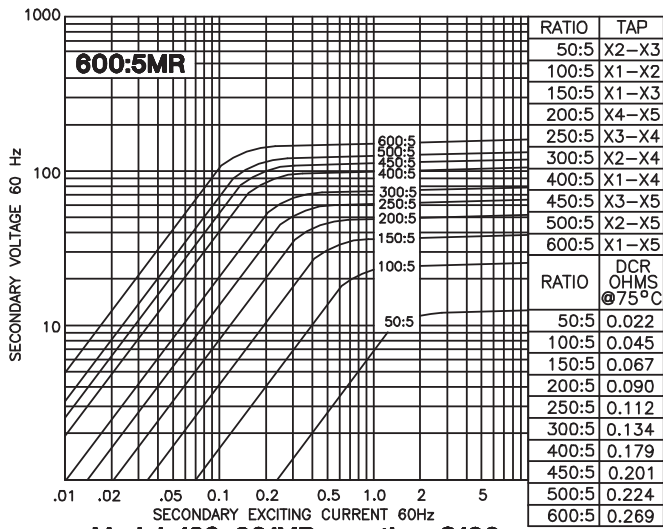
Insulation Level:
0.6kV, BIL 10kV full wave



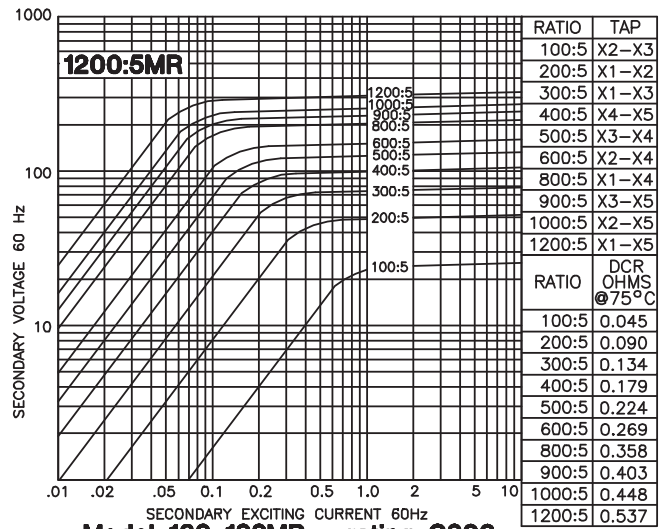
E228202

- Terminals are brass screws No. 10 - 32 UNF
□ with one flat washer and lockwasher.
- □ The transformer winding is arranged so that the
□ turns are fully distributed between all taps.
- Order mounting bracket kit 139-CR-CL separately.
- □ Approximate weight: 40 lbs.

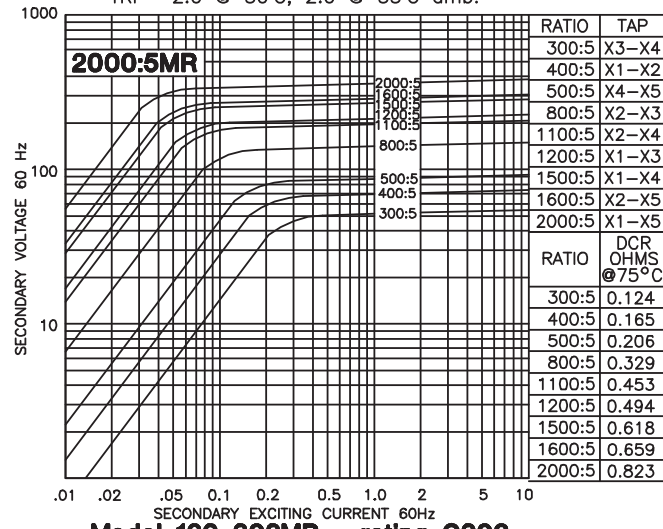




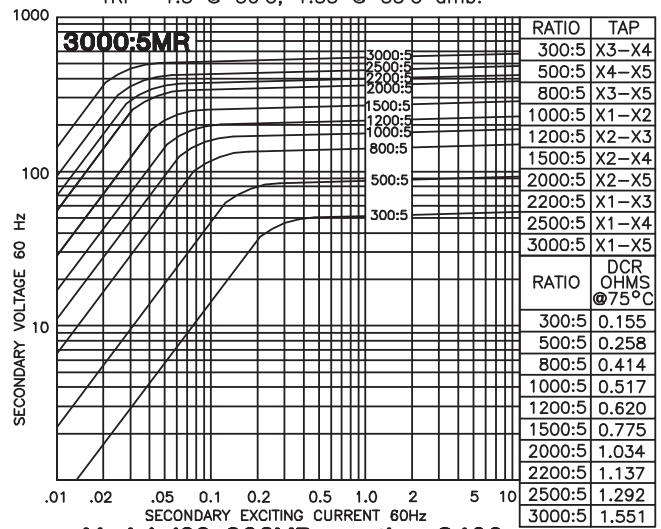
Model 139-601MR - rating C100
TRF= 2.0 @ 30°C, 2.0 @ 55°C amb.



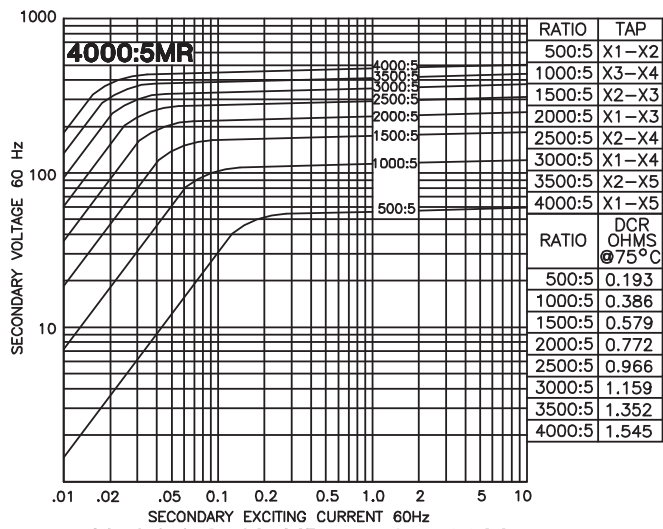
Model 139-122MR - rating C200
TRF= 1.5 @ 30°C, 1.33 @ 55°C amb.



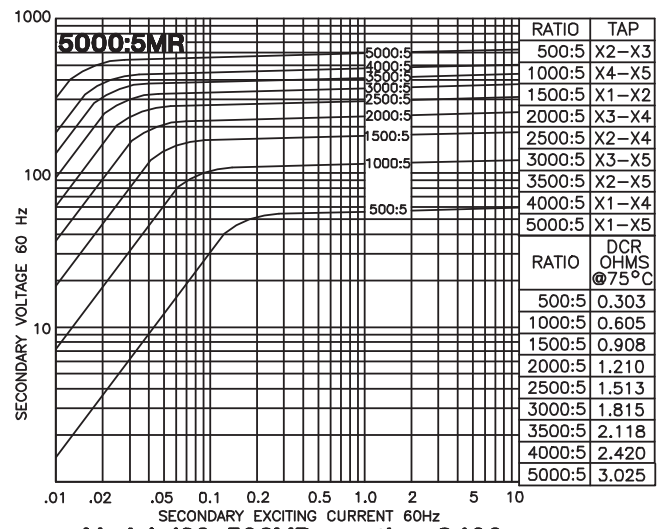
Model 139-202MR - rating C200
TRF= 1.5 @ 30°C, 1.33 @ 55°C amb.



Model 139-302MR - rating C400
TRF= 1.33 @ 30°C, 1.0 @ 55°C amb.



Model 139-402MR - rating C200
TRF= 1.0 @ 30°C, 0.8 @ 55°C amb.



Model 139-502MR - rating C400
TRF= 1.0 @ 30°C, 0.8 @ 55°C amb.