

Models 14, 15, 16

Window Diameter 0.50", 0.94", 1.25"

Note: Model 15 available now.

Models 14 and 16 available mid-September 2002.

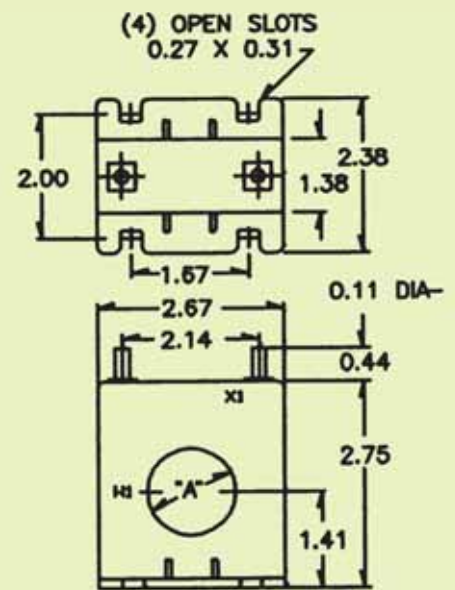
Catalogue Number	Current Ratio	Accuracy at 60Hz	Burden VA at 60Hz	Dim 'A'
14**-500	50:5	±1.5%	2.5	
14**-600	60:5	±1.5%	2.5	
14**-750	75:5	±1.5%	2.5	0.50
14**-800	80:5	±1.0%	2.5	
14**-101	100:5	±1.0%	3.0	
15**-500	50:5	±1.5%	2.0	
15**-600	60:5	±1.5%	2.0	
15**-750	75:5	±1.5%	2.5	
15**-800	80:5	±1.0%	2.0	
15**-101	100:5	±1.0%	2.0	0.94
15**-121	120:5	±1.0%	3.0	
15**-1250	125:5	±1.0%	4.0	
15**-151	150:5	±1.0%	5.0	
15**-1750	175:5	±1.0%	10.0	
15**-201	200:5	±1.0%	12.5	

Catalogue Number	Current Ratio	Accuracy at 60Hz	Burden VA at 60Hz	Dim 'A'
16**-500	50:5	±2%	1.5	
16**-600	60:5	±2%	1.5	
16**-750	75:5	±2%	3.0	
16**-800	80:5	±2%	3.0	
16**-101	100:5	±1%	3.0	
16**-121	120:5	±1%	4.0	1.25
16**-1250	125:5	±1%	5.0	
16**-151	150:5	±1%	6.0	
16**-1750	175:5	±1%	7.0	
16**-201	200:5	±1%	8.0	
16**-251	250:5	±1%	10.0	
16**-301	300:5	±1%	10.0	
16**-401	400:5	±1%	15.0	

**** NOTE:** When ordering, prefix Catalogue Number with model designation required, i.e. 15SFT-151.



SFT Models



Application:

With ammeters, energy management systems and instrumentation.

Frequency:

5-400Hz

Insulation Level:

- 600 Volts, 10kV BIL full wave
- Terminals are brass studs No. 8-32 with one flat washer, lockwasher and regular nut
- Flexible leads are UL 1015 105°C, CSA approved, #16 AWG, 24" long
- Non-standard length to be specified
- SFT case style also available as SFL with leads
- Approximate weight: 0.9 lbs

Approvals

