

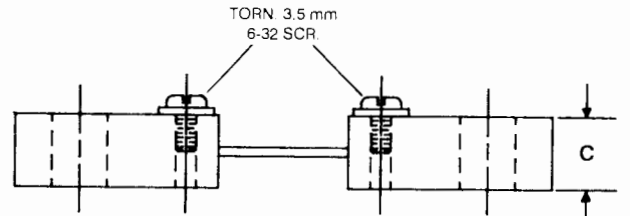
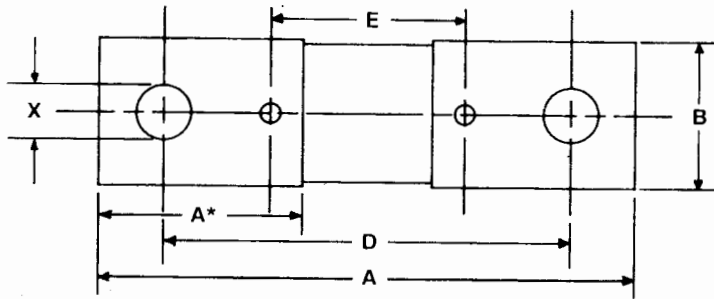
DC AMMETER SHUNTS



DERIVADORES DE CORRIENTE (SHUNTS)

50mV MODEL / TYPE FE 5 a 80 AMPERES / 5 THROUGH 80 AMPERES / 50mV MODELO

CATALOG No. No. CATALOGO	AMP	A		A*		B		C		D		E		X	
		mm	in	mm	in	mm	in	mm	in	mm	in	mm	in	mm	in
FE-5-50	5	79.38	3 1/8	28.58	1 1/8	12.7	1/2	6.35	1/4	63.5	2 1/2	31.75	1 1/4	6.75	17/64
FE-10-50	10	79.38	3 1/8	28.58	1 1/8	12.7	1/2	6.35	1/4	63.5	2 1/2	31.75	1 1/4	6.75	17/64
FE-15-50	15	79.38	3 1/8	28.58	1 1/8	12.7	1/2	6.35	1/4	63.5	2 1/2	31.75	1 1/4	6.75	17/64
FE-20-50	20	79.38	3 1/8	28.58	1 1/8	12.7	1/2	6.35	1/4	63.5	2 1/2	31.75	1 1/4	6.75	17/64
FE-25-50	25	79.38	3 1/8	28.58	1 1/8	12.7	1/2	6.35	1/4	63.5	2 1/2	31.75	1 1/4	6.75	17/64
FE-30-50	30	79.38	3 1/8	28.58	1 1/8	12.7	1/2	6.35	1/4	63.5	2 1/2	31.75	1 1/4	6.75	17/64
FE-32-50	32	79.38	3 1/8	28.58	1 1/8	12.7	1/2	6.35	1/4	63.5	2 1/2	31.75	1 1/4	6.75	17/64
FE-35-50	35	79.38	3 1/8	28.58	1 1/8	12.7	1/2	6.35	1/4	63.5	2 1/2	31.75	1 1/4	6.75	17/64
FE-40-50	40	79.38	3 1/8	28.58	1 1/8	12.7	1/2	6.35	1/4	63.5	2 1/2	31.75	1 1/4	6.75	17/64
FE-45-50	45	79.38	3 1/8	28.58	1 1/8	12.7	1/2	6.35	1/4	63.5	2 1/2	31.75	1 1/4	6.75	17/64
FE-50-50	50	79.38	3 1/8	28.58	1 1/8	12.7	1/2	6.35	1/4	63.5	2 1/2	31.75	1 1/4	6.75	17/64
FE-60-50	60	79.38	3 1/8	28.58	1 1/8	19.05	3/4	6.35	1/4	63.5	2 1/2	31.75	1 1/4	6.75	17/64
FE-64-50	64	79.38	3 1/8	28.58	1 1/8	19.05	3/4	6.35	1/4	63.5	2 1/2	31.75	1 1/4	6.75	17/64
FE-70-50	70	79.38	3 1/8	28.58	1 1/8	19.05	3/4	6.35	1/4	63.5	2 1/2	31.75	1 1/4	8.33	21/64
FE-75-50	75	79.38	3 1/8	28.58	1 1/8	19.05	3/4	6.35	1/4	63.5	2 1/2	31.75	1 1/4	8.33	21/64
FE-80-50	80	79.38	3 1/8	28.58	1 1/8	19.05	3/4	6.35	1/4	63.5	2 1/2	31.75	1 1/4	8.33	21/64



50mV MODEL / TYPE FE 100 a 200 AMPERES / 100 THROUGH 200 AMPERES / 50mV MODELO

CATALOG No. No. CATALOGO	AMP	A		A*		B		C		D		E		X	
		mm	in	mm	in	mm	in	mm	in	mm	in	mm	in	mm	in
FE-100-50	100	92.08	3 1/8	32.54	1 9/32	25.4	1	9.53	3/8	69.85	2 3/4	34.93	1 3/8	8.33	21/64
FE-120-50	120	92.08	3 1/8	34.93	1 3/8	25.4	1	9.53	3/8	69.85	2 3/4	34.93	1 3/8	8.33	21/64
FE-125-50	125	92.08	3 1/8	34.93	1 3/8	25.4	1	9.53	3/8	69.85	2 3/4	34.93	1 3/8	8.33	21/64
FE-150-50	150	92.08	3 1/8	34.93	1 3/8	25.4	1	12.7	1/2	69.85	2 3/4	31.75	1 1/4	9.53	3/8
FE-160-50	160	92.08	3 1/8	34.93	1 3/8	25.4	1	12.7	1/2	69.85	2 3/4	31.75	1 1/4	9.53	3/8
FE-175-50	175	104.78	4 1/8	41.28	1 5/8	25.4	1	12.7	1/2	73.03	2 7/8	31.75	1 1/4	11.51	29/64
FE-200-50	200	95.25	3 3/4	34.93	1 3/8	25.4	1	12.7	1/2	73.03	2 7/8	31.75	1 1/4	11.51	29/64

- A: Over all length (Brass)
- A*: Length of brass piece
- B: Width of brass piece
- C: Thickness of brass piece
- D: Distance apart Current and mounting bolts
- E: Distance apart Potential connection
- X: Size Current and mounting bolt holes

- A: Largo total
- A*: Largo de la pieza de latón
- B: Ancho del latón
- C: Altura del latón
- D: Distancia entre los barrenos
- E: Distancia entre los puntos de conexión
- X: Diámetro de los barrenos

Dimensions in mm (inches). Tolerances ± 0.381 mm (0.015in) for hole diameters, other tolerances ± 0.762 mm (0.030in) unless otherwise noted. Dimensions are subject to change without notice.

Las dimensiones están en milímetros (pulgadas) con tolerancia ± 0.381 mm (0.015 in) para los diámetros de los barrenos, para las demás medidas 0.762 mm (0.030 in) a menos de que se especifique otra. Las dimensiones pueden variar sin previo aviso.